

## Single Point Bench Scale



### FEATURES

- Rugged square structural tubing scale base
- USDA approved 304 stainless steel option
- Integral bubble level
- Compatible with all BLH transmitters, indicators, and network products
- Optional 304 stainless steel clamshell shield for load cell washdown protection

### DESCRIPTION

PLB Accumark™ bench scales are designed for high accuracy and repeatability in harsh industrial environments. Standard units are equipped with a stainless steel weighing surface, built-in shock and overload protection, and adjustable mounting feet with bubble leveling.

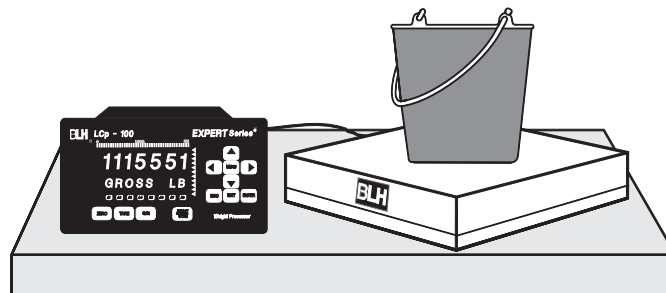
Low capacity 10" x 10" bench scales feature all stainless steel construction, including the scale base. Optionally, medium capacity scales are available with stainless steel base assemblies that meet USDA requirements and load cell

'clamshell' shields for added protection in washdown environments.

### APPLICATIONS

- Measure small batch additives
- Pilot plant vessel weighing
- Container filling systems
- Food/pharmaceutical processing

### CONFIGURATION



**SPECIFICATIONS**

|                     |   |
|---------------------|---|
| Rated Output        | 0.91 mV/V   |
| Repeatability       | 0.015% of rated output  |
| Hysteresis          | 0.015% of rated output  |
| Non-Linearity       | 0.015% of rated output  |
| Creep               | 0.025% of rated output  |
| Maximum Overload    | 200%  |
| Overload Protection | 5 point independently adjusted (shock absorbing spider 10" x 10") |
| Output Impedance    | 350 ohms (+ 3 ohms)   |
| Input Impedance     | 415 ohms (+ 15 ohms)  |

**Compensated Temperature**

|                        |                         |
|------------------------|-------------------------|
| Range                  | +14°F to +122°F         |
| Safe Temperature Range | -22°F to +158°F         |
| Cable Length           | 10 ft - 6 wire shielded |
| Recommended Excitation | 10 V                    |

**Approvals**

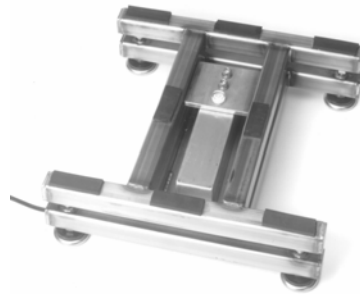
|                     |  |
|---------------------|--|
| FM (Factory Mutual) | 3611 (Class I, II, III; Div.1,2; Groups A-G) |
|---------------------|--|

NOTE: On a special order basis, units are available with approval for Class I and II, Division 1 hazardous areas.

**Cable Connection**

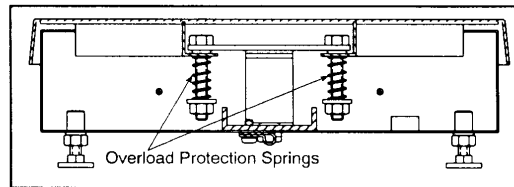
All models come with ten feet of color coded load cell cable. The color code for six and four wire connection is as follows:

| SIX WIRE COLOR CODE |              |
|---------------------|--------------|
| COLOR               | FUNCTION     |
| Red                 | + Signal     |
| White               | - Signal     |
| Green               | + Excitation |
| Black               | - Excitation |
| Blue                | + Sense      |
| Brown               | - Sense      |
| Yellow/Bare         | Shield       |



**DIMENSIONS**

Cover removed showing optional stainless steel clamshell shield, bubble level, and rugged construction with overload stops (12 x 12 and 12 x 18 inch models).



| SIZES (INCHES) | CAPACITY                                  | HEIGHT (INCHES) |
|----------------|---|-----------------|
| 10 x 10        | 5, 10, 15, 20 & 30lb                      | 3.15            |
| 12 x 12        | 30, 50 & 100lb                            | 3.62            |
| 12 x 18        | 50 & 100lb                                | 3.62            |
| 18 x 18        | 50, 100, 150, 200, 250, 300, 500 & 1000lb | 5.25            |
| 18 x 24        | 50, 100, 150, 200, 250, 300, 500 & 1000lb | 5.25            |
| 24 x 24        | 100, 150, 200, 250, 300, 500 & 1000lb     | 5.25            |